

Si-93

Sauermann® part #

SI93CE01UN23

sauermann®

Si-93

For refrigerated display cabinets :

- Positive
- Negative



Scan this QR code to the data sheet of this product.



exclusive

Ultraflat pump with patented anti-biofilm system, adapted to the latest refrigerated displays.

Strong Points



Prevents biofilm generation

- Exclusive patented anti biofilm system.
- Ecological solution without any chemical product.



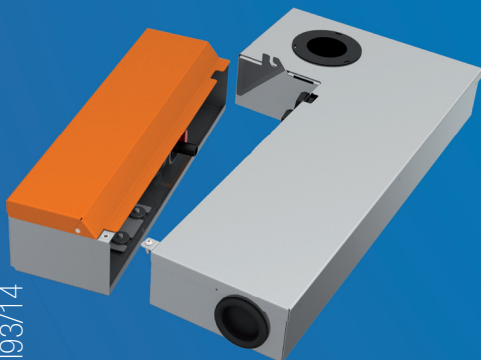
Easier cleaning, rapid maintenance

- Reduced cleaning frequency thanks to the anti biofilm system.
- Pump compartment easy to detach for cleaning.
- Debris collecting basket.
- Easy opening cover.
- Unpluggable power cord.



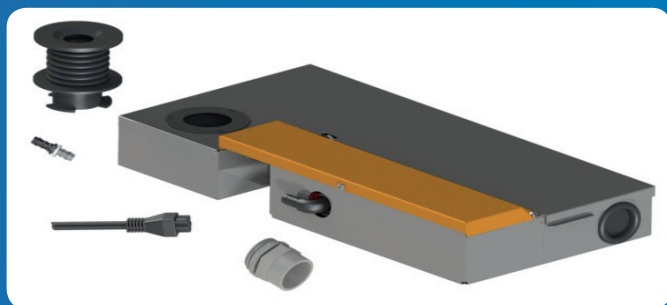
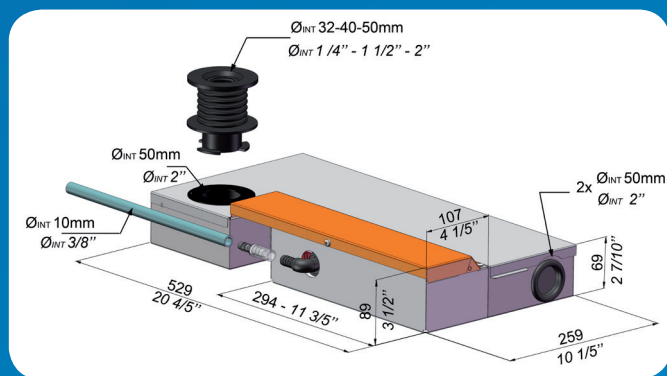
Several installation configurations

- 3 possible condensate inlets : top, left or right.
- Universal inlet adaptor : 32 - 40 - 50 mm
- Adjustable outlet direction.
- Ultraflat profile, tank is only 69mm high.



KIT CONTENT

- Membrane pump.
- Unpluggable power cord 1.5 m:
 - 2 power wires,
 - 2 safety contact wires.
- Rubber bellows Ø int. 32, 40 and 50mm.
- Through the wall Ø 40mm.
- Discharge nozzle Ø 10mm.



Sauermann® recommended accessories

ACC 00126



Clear PVC hose
Ø int. 10mm (3/8")
L : 25m

ACC 00205



Self-sealing fitting for drain hose
Ø int. 3/8" (10 mm)
Lot de 3

exclusive

THE VERY FIRST NON-CHEMICAL ANTI BIOFILM SYSTEM !

A unique system consisting of a **revolutionary** surface treatment that slows down the formation of biofilm. The first green alternative to chemical tablets, looking after your safety and the environment.



Environmentally friendly
Reliable
Modular

ACTUAL FLOW RATES (l/h)

Discharge Head	Flow rate l/h
0m	360
2m	340
4m	315
6m	290
8m	260

TECHNICAL SPECIFICATIONS

Max. flow rate :	360 l/h
Max. discharge head :	20 m - flow rate : 100 l/h
Max. pressure :	30 m - flow rate : 0 l/h
Voltage :	230 V ~ 50/60 Hz - 60 W - 0.30A
Detection levels (mm) :	ON : 46, OFF : 21, Alarm : 50
Safety switch	NO - 8 A resistive - 250 V
Operating cycle	30% : 3s ON - 7s OFF
Safety standard	CE

sauermann®

www.sauermannpumps.com



SAUERMANN

Parc d'activités de l'Orée de Chevry, Route de Férolles
77173 Chevry Cossigny / France
Tel. : (+33) 1 60 62 06 06 Fax : (+33) 1 60 62 09 09
E-mail : info@sauermann.fr